

Product Description

WF161S is a tire pressure sensor for tire pressure/inflator pump with mV output without temperature and pressure compensation, MEMS piezoresistive pressure sensing core encapsulated in FR4 PCB, rated pressure range 7 bar, contact factory for different pressure ranges.

Performance Specifications

VDD=5V, T=25° C unless otherwise stated.

Parameter specifications

Parameters	Min.	Typ.	Max.	Unit	Note
Pressure range		7		bar	2
Supply Voltage	0	5	10	V	
Supply Current	0	1.5	2	mA	
Sensitivity	70	100	130	mV	
Nonlinear		+/-0.1	+/-0.3	%FS	1
Zero point	-40	0	+40	mV	
Bridge arm resistance	3	5	6	kΩ	
Bridge arm resistance temperature coefficient	2400	2700	3300	ppm/°C	
Temperature coefficient of sensitivity	-2600	-1900	-1500	ppm/°C	
Zero temperature coefficient		1		μV/V/°C	
Overvoltage			2X	FS	
Burst pressure			3X	FS	
Operating temperature	-40		85	°C	
Storage temperature	-40		125	°C	

Note:

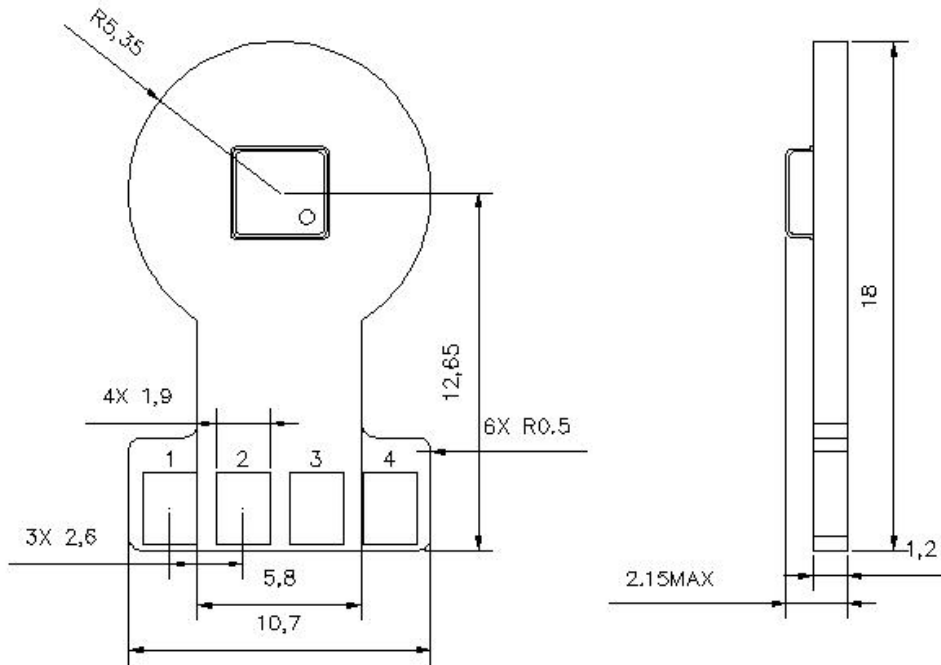
1. Best fit straight line
2. Pressure range optional, contact factory



WF161S

Tire Pressure/Inflator Pressure Sensor

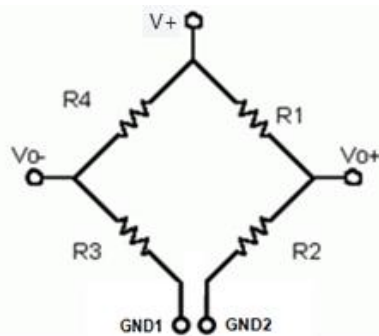
Outline size



Notes:

1. All dimensions in mm
2. Dimension tolerance is +/-0.1mm.

Pin Definitions



Pin	1	2	3	4
Definition	GND1/ GND2	V0-	V0+	V+